

Mac ESC/POS Driver installation

1.1. Installation.

1. Extract this archive creating the sewooreceipt_bin directory automatically.

```
# tar -zxvf sewooreceipt_bin.tar.gz [Enter]
```

2. Open your favorite shell (bash, etc.) and move to the sewooreceipt_bin directory.

```
# cd sewooreceipt_bin [Enter]
```

3. Execute the 'su' command to obtain super-user level permissions.

You must enter the root user's password for this to succeed. Be careful!.

4. Type 'sudo sh setup.sh' to install this package onto your computer.

```
# sudo sh setup.sh [Enter]
```

A successfull install should result in output similar to this:

SEWOO TECH

SEWOO TECH CUPS DRIVER Mac OS Installer

Models included:

LK-P11

LK-P12

LK-P20

LK-P21

LK-P30

LK-P31

LK-P41

LK-P43

LK-P4xx

Searching for ServerRoot, ServerBin, and DataDir tags in /etc/cups/cupsd.conf

ServerBin tag not present in cupsd.conf - using default

DataDir tag not present in cupsd.conf - using default

ServerRoot =

ServerBin =

DataDir =

Copying rastertolpk11 filter to /usr/libexec/cups/filter

Copying rastertolpk12 filter to /usr/libexec/cups/filter

Copying rastertolpk20 filter to /usr/libexec/cups/filter

Copying rastertolpk21 filter to /usr/libexec/cups/filter

Copying rastertolpk30 filter to /usr/libexec/cups/filter

Copying rastertolpk31 filter to /usr/libexec/cups/filter

Copying rastertolpk41 filter to /usr/libexec/cups/filter

Copying rastertolpk43 filter to /usr/libexec/cups/filter

Copying rastertolpk4xx filter to /usr/libexec/cups/filter

Copying model ppd files to //usr/share/cups/model/SEWOO

Restarting CUPS

Install Complete

Add printer queue using Printing Manager, or

Add printer queue using OS tool, <http://localhost:631>, or <http://127.0.0.1:631>

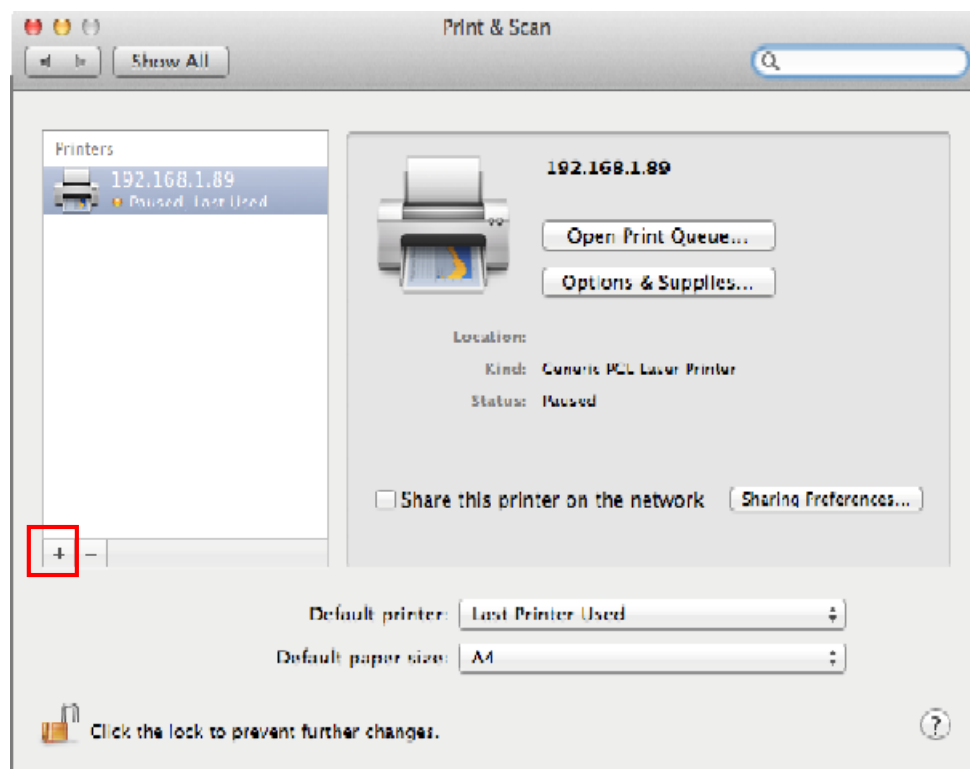
1.2. How to Add Printer (Example : SEWOO LK-P20)

System Preferences ➔ Print & Scan or <http://127.0.0.1:631>

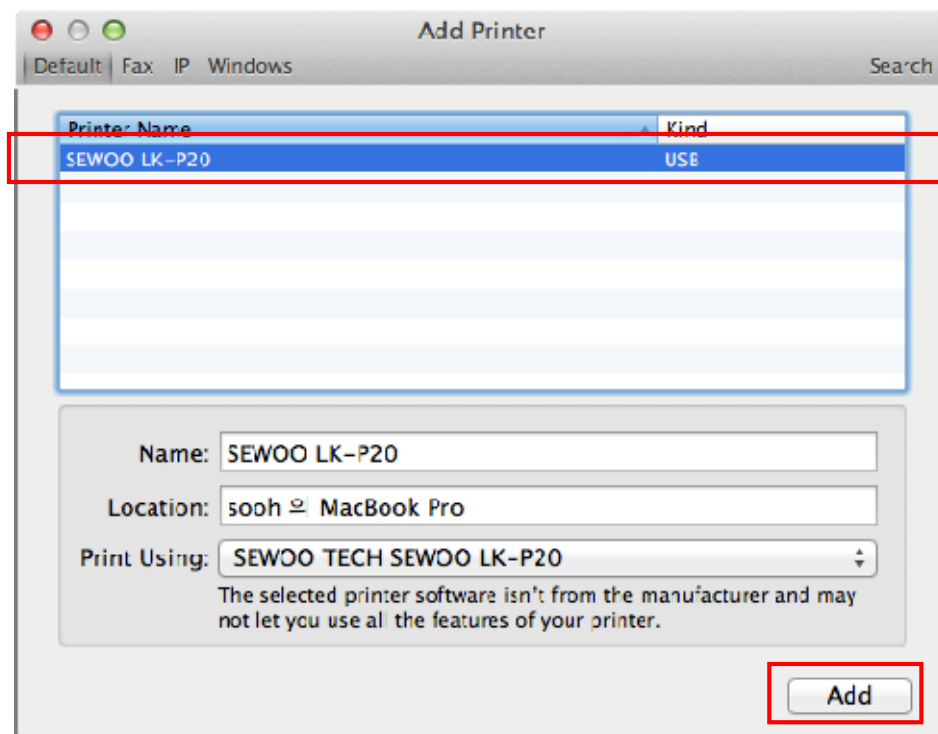
1.2.1. On the Apple menu, click System Preferences and click Print & Scan.

1.2.2. Connect the printer to desktop and turn on the printer.

1.2.3. Click the “+” button to add printer.



1.2.4. Select “SEWOO LK-P20” and click “Add” button.



1.2.5. Complete.

